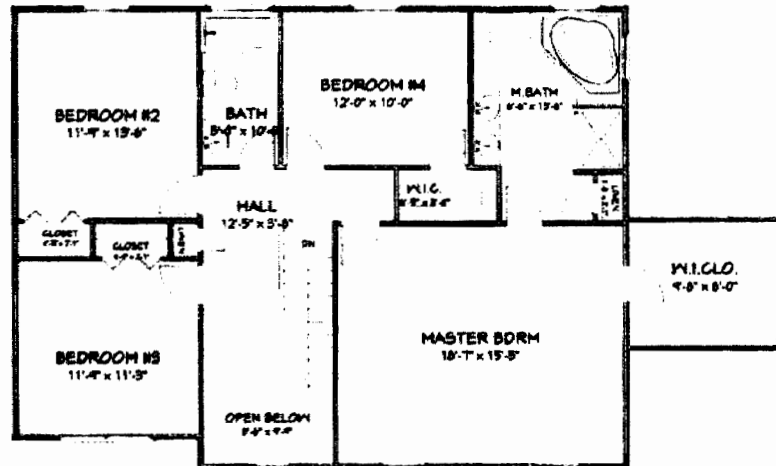
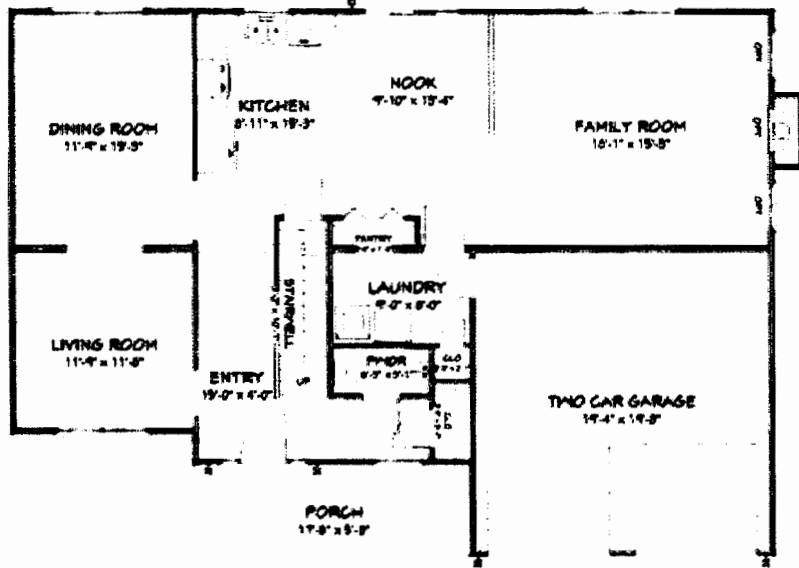


# The Mancini Model

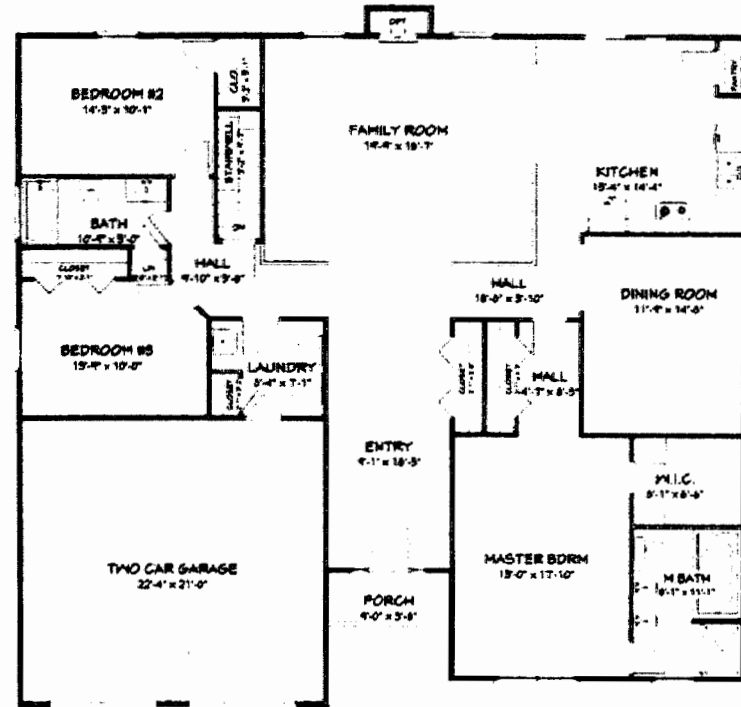
\$269,900



**MODEL TYPE: 2 STORY** · (4) Bedrooms · (2.5) Baths  
 Square Footage: **2,328**

# The Adams Model

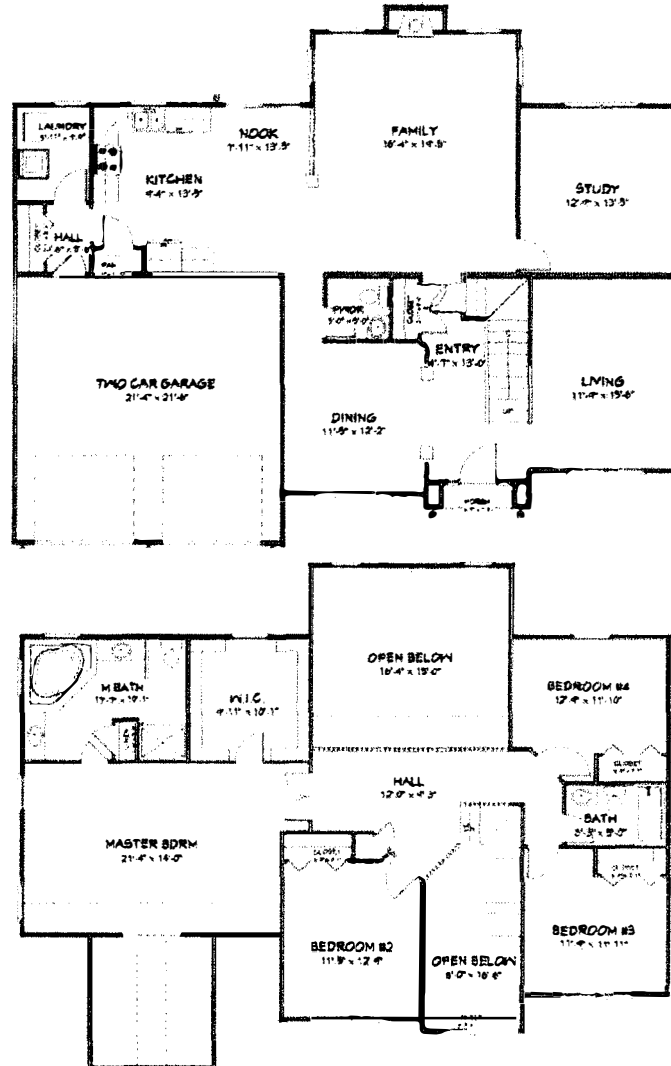
\$276,900



**MODEL TYPE: RANCH** · (3) Bedrooms · (2) Baths  
 Square Footage: **2,084**

# The New Hampshire Model

\$304,900

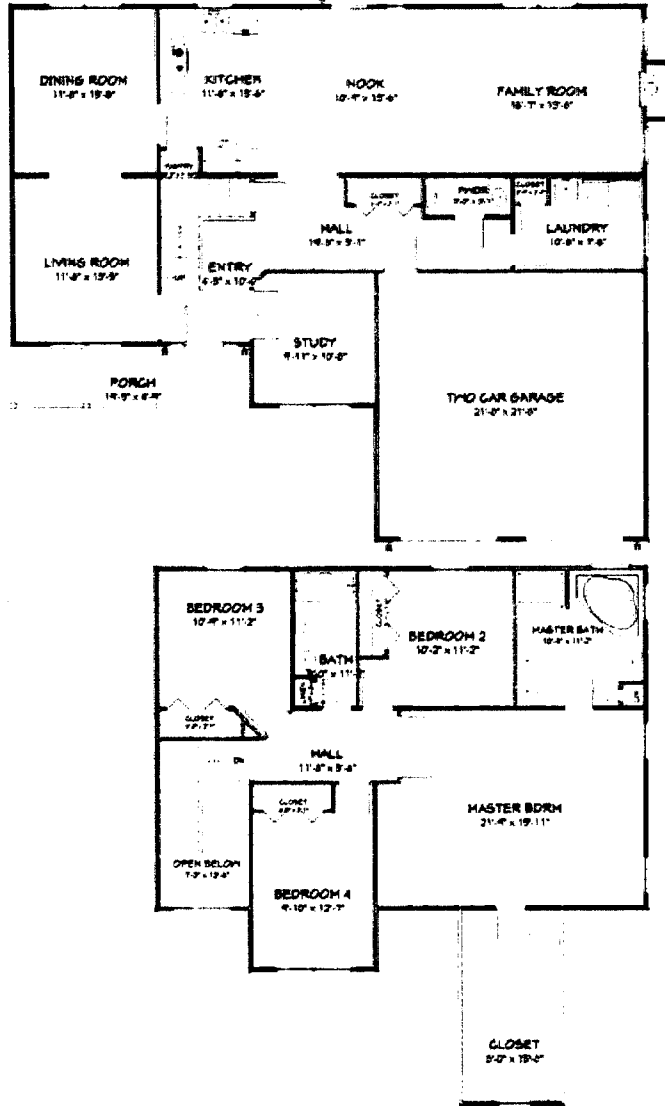


**MODEL TYPE: 2 STORY · (4) Bedrooms · (2.5) Baths**  
**Square Footage: 2,834**

BROCHURE AND FLOOR PLANS ARE FOR ILLUSTRATIVE PURPOSES ONLY. EXTERIOR RENDERING AND ROOM DIMENSIONS ARE APPROXIMATE AND SUBJECT TO CHANGE. FINAL PRINT TAKES PRECEDENCE OVER BROCHURE ARTWORK AND FLOOR PLANS. BUILDER RESERVES THE RIGHT TO MAKE CHANGES TO PLANS. ALL MODELS ARE PROPERTY OF FOLINO HOMES, INC. PRICING SUBJECT TO CHANGE. PLEASE CHECK WITH SALES REPRESENTATIVE FOR MOST RECENT PRICING.

# The Redwood Model

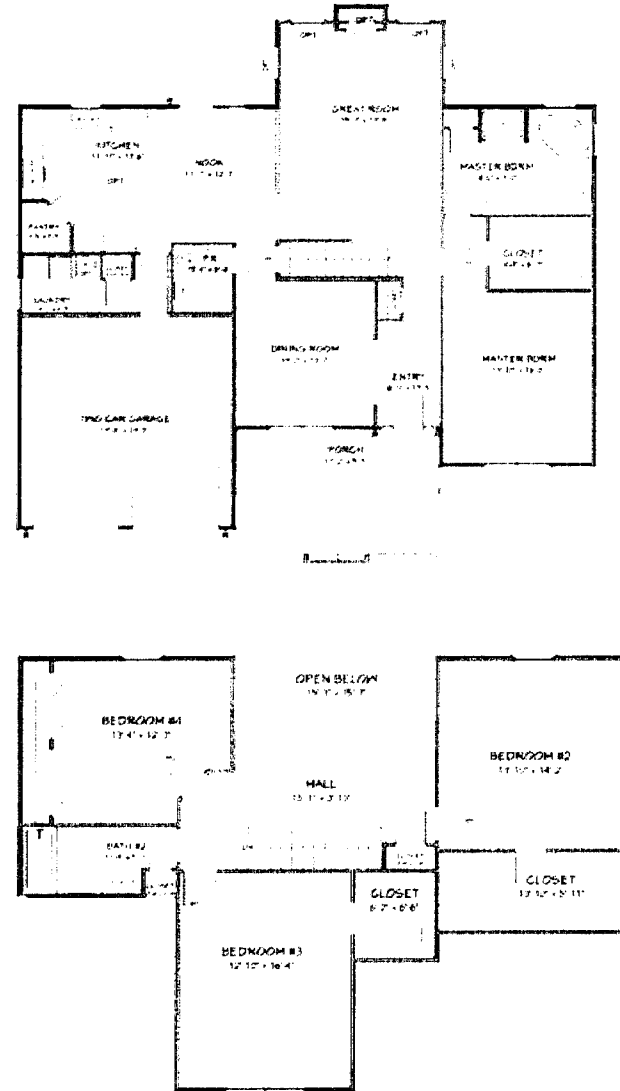
\$287,900



**MODEL TYPE: 2 STORY · (4) Bedrooms · (2.5) Baths**  
 Square Footage: **2,598**

# The Rockingham Model

\$287,900



**MODEL TYPE: 2 STORY · (4) Bedrooms · (2.5) Baths**  
 Square Footage: **2,603**